



EVOLUTIE VAN DE AMMONIETEN

Reconstructing Time

Artis Geological Museum (Amsterdam, The Netherlands)
October 2005

Reconstructing Time was the outcome of a year of research and production within the Artis Geological Museum, Amsterdam.

The first element of the work was a series of handcrafted porcelain ‘replicas’ of a select part of the Holotype collection. (i)

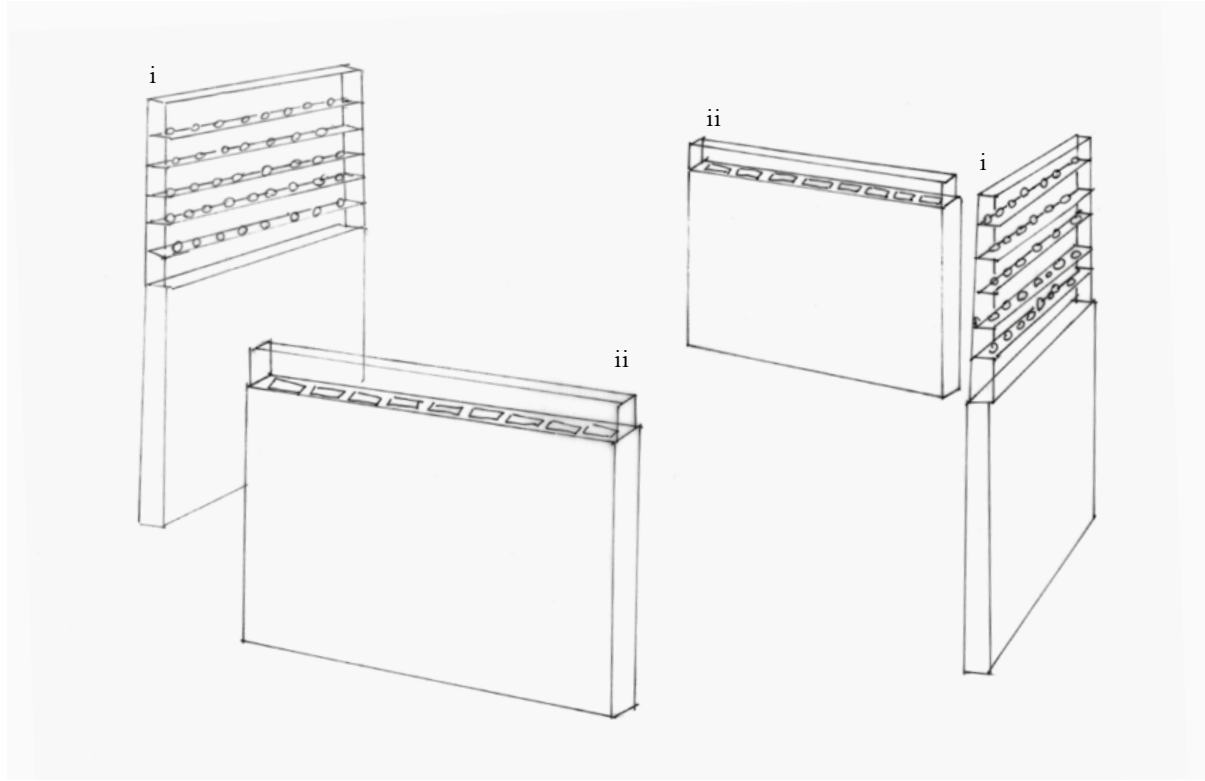
The Holotype collection is of specific scientific importance—these samples were the first to be declared a ‘type’ and be granted a name. Scientists must always refer to this unique sample when quoting the ‘type’. This collection of Holotypes is from the family of sea urchins and they were discovered in Timor over the course of various expeditions.

The second component comprises a series of drawings of microfossils, that attempt to describe what the naked eye cannot see. (ii) Microfossils are fossils of unicellular animals. They are usually less than one millimeter in diameter and can be seen only through a microscope. For this reason they are seldom seen by non-scientists. This series deals with two types of microfossils; one of them was brought from Borneo, Indonesia and the other from South Limburg, Holland.

These collections were enclosed within the depot of the Geological Museum and remained there for many years. *Reconstructing Time* brought these two collections into simultaneous display thus offering a complementary perspective to the view afforded them by science.



vitrine design



i

Collection of Holotypes
from the depot of Artis Geological Museum
and displayed for the exhibition



Handcrafted replicas
porcelain
series of 70, variable sizes (between 1 and 5 cm)





T 5684 *Parastachyocrinus malaianus*



B 1330 *Stachyocrinus zea*



B 1305 *Synyphocrinus weidneri*



O 9958 *Calycoocrinus curvatus coronatus*



T 5670 *Graphiocrinus pumilus*



T 5670 *Graphiocrinus pumilus*



O 9966 *Proapsidocrinus permicus*



B 1276 *Proapsidocrinus cuspidatus*



T 5686 *Martinia nucula*



T 5870 *Actinocrinus spinaetectus*



T 5873 *Actinocrinus carinatus*



T 9562 *Entrochus*



T 9571 Entrochus



B 1268 Calyocrinus curvatus labrosus



B 1323 Timorocrinus pentagonalis var. nodosa



T 9508 Foraminiferen-kalk



B 4120 *Graphiocrinus amplior* cf. *timoricus*



B 1312 *Ceratocrinus exornatus*



B 1261 *Camptocrinus indoaustralicus*

Process



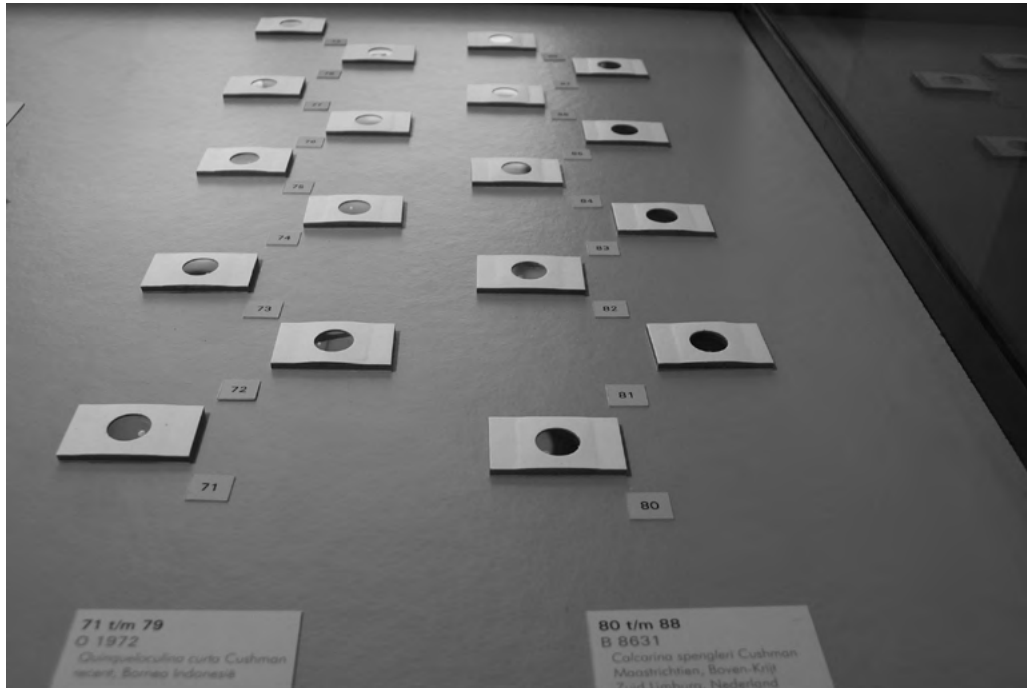
List of Fossils

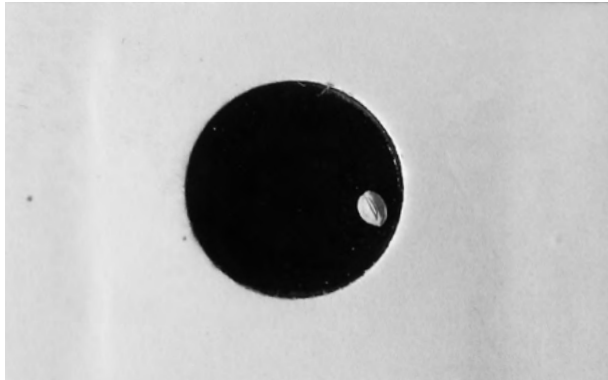
- 1 B 6640 *Schizoblastus pseudodelta* Wanner var. *furcata* v.Eijkeren (Holotypus)
- 2 O 9938 *Timoroblastus coronatus* Wanner (Holotypus)
- 3 B 6641 *Schizoblastus jonkeri* Wanner var. *excavatus* v.Eijkeren (Holotypus)
- 4 T 6468 crinoidenkalk-fragment
- 5 T 6468 crinoidenkalk-fragment
- 6 D 9998 *Neozeacrinus peramplus*
- 7 D 9998 *Neozeacrinus peramplus*
- 8 D 9998 *Neozeacrinus peramplus*
- 9 T 5856 *Neoplatycrinus dilatatus* Wanner
- 10 T 5833 *Eutelecrinus poculiformis* Wanner
- 11 T 5854 *Neoplatycrinus dilatatus* Wanner
- 12 T 5855 *Neoplatycrinus dilatatus* Wanner
- 13 T 5853 *Neoplatycrinus dilatatus* Wanner
- 14 T 5857 *Neoplatycrinus dilatatus* Wanner
- 15 B 1285 *Cydonocrinus turbinatus* Wanner (Holotypus)
- 16 B 1282 *Thetidocrinus piriformis* Wanner (Holotypus)
- 17 B 1286 *Cydonocrinus turbinatus* Wanner (Holotypus)
- 18 B 1287 *Cydonocrinus turbinatus* Wanner (Holotypus)
- 19 B 1275 *Calycocrinus tuberculatus* Wanner (Holotypus)
- 20 O 9963 *Calycocrinus labiatus* Oyens (Holotypus)
- 21 O 9960 *Calycocrinus curvatus labrosus* Wanner (Holotypus)
- 22 B 1271 *Calycocrinus poculum* Wanner (Holotypus)
- 23 B 1270 *Calycocrinus poculum* Wanner (Holotypus)
- 24 B 1311 *Spheniscocrinus spinosus* Wanner (Holotypus)g
- 25 T 5666 *Poteriocrinidae* gen.? sp.?
- 26 O 9992 *Notiocrinus timoricus* Wanner (Holotypus)
- 27 B 1272 *Calycocrinus mayor* Wanner (Holotypus)
- 28 B 1263 *Petrocrinus beyrichi* Wanner (Holotypus)
- 29 T 5667 *Graphiocrinus amplior* Wanner
- 30 B 1290
- 31 B 1255 *Syntomocrinus sundaicus* Wanner (Holotypus)
- 32 T 5872 *Actinocrinus exornatus*
- 33 B 1305 *Synphocrinus weidneri* Wanner (Holotypus)
- 34 B 1330 *Stachiocrinus zea* Wanner (Holotypus)
- 35 T 5684 *Parastachyocrinus malaianus* Wanner
- 36 B 4120 *Graphiocrinus amplior* cf. *timoricus* Wanner
- 37 B 1273 *Calycocrinus patella* Wanner (Holotypus)
- 38 T 5874 *Parastachyocrinus inflatus* (Holotypus)
- 39 O 9958 *Calycocrinus curvatus coronatus* Wanner (Holotypus)
- 40 T 5669 *Graphiocrinus quinquelobus* Wanner
- 41 T 5670 *Graphiocrinus pumilus* Wanner
- 42 T 5670 *Graphiocrinus pumilus* Wanner
- 43 T 5885 *Paragraphiocrinus exornatus* Wanner
- 44 T 5668 *Graphiocrinus* Wanner
- 45 T 5685 *Parastachyocrinus malaianus* Wanner
- 46 B 4119 *Graphiocrinus* cf. *amplior* Wanner
- 47 B 4121 *Graphiocrinus* sp. Wanner
- 48 T 5873 *Actinocrinus carinatus* Wanner
- 49 T 5870 *Actinocrinus spinaectus* Wanner
- 50 O 9966 *Proapsidocrinus permicus* Wanner (Holotypus)
- 51 B 1276 *Proapsidocrinus cuspidatus* Wanner (Holotypus)
- 52 B 1312 *Ceratocrinus exornatus* Wanner (Genotypus)
- 53 B 1261 *Campocrinus indoaustralicus* Wanner (Holotypus)
- 54 T5686 *Martinia nucula*
- 55 O 9961 *Calycocrinus curvatus labrosus* Wanner (Holotypus)
- 56 B 1380 *Griffithides indicus* Tesch (Holotypus)
- 57 B 1382 *Griffithides indicus* Tesch (Holotypus)
- 58 O 9981 *Parabursacrinus pyramidatus* Wanner (Holotypus)
- 59 B 1266
- 60 O 9962 *Calycocrinus curvatus labrosus* Wanner (Holotypus)
- 61 B 1292 *Depaocrinus ottowi* Wanner (Holotypus)
- 62 O 9979 *Neozeacrinus springeri* Wanner (Holotypus)
- 63 T 5672 *Paraplasocrinus transitorius mammillaris* Wanner
- 64 T 9562 *Entrochus* sp.
- 65 T 9571 *Entrochus* sp.
- 66 T 5880 *Stomiocrinus piriformis* Wanner
- 67 T 9508 *Foraminiferen-kalk*
- 68 T 9555 *Entrochus verbecki* Holotypus
- 69 B 1323 *Timorocrinus pentagonalis* var. *nodosa* Wanner (Holotypus)
- 70 B 1268 *Calycocrinus curvatus labrosus* Wanner (Holotypus)

ii

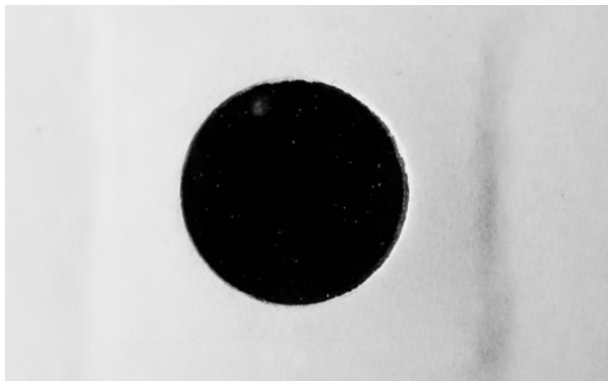
Collection of microfossils
from the depot of Artis Geological Museum
and displayed for the exhibition

pencil on paper
series of 14 drawings
14 × 7 cm each

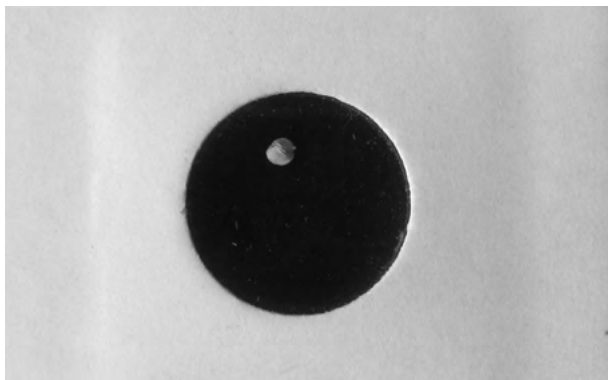




O 1972 *Quinqueloculina curta*



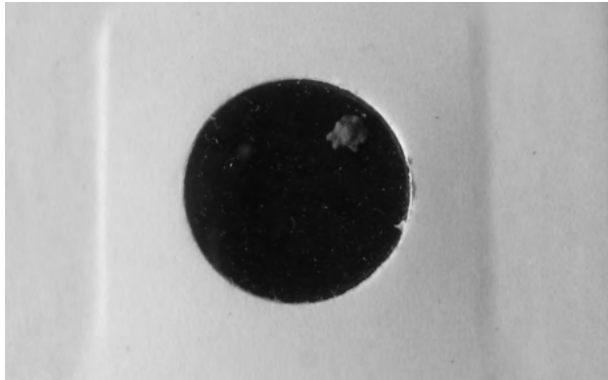
O 1972 *Quinqueloculina curta*



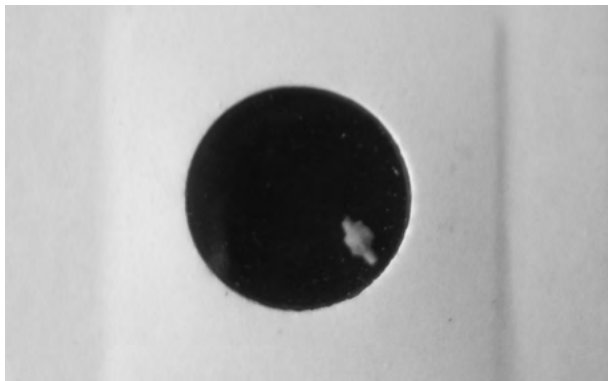
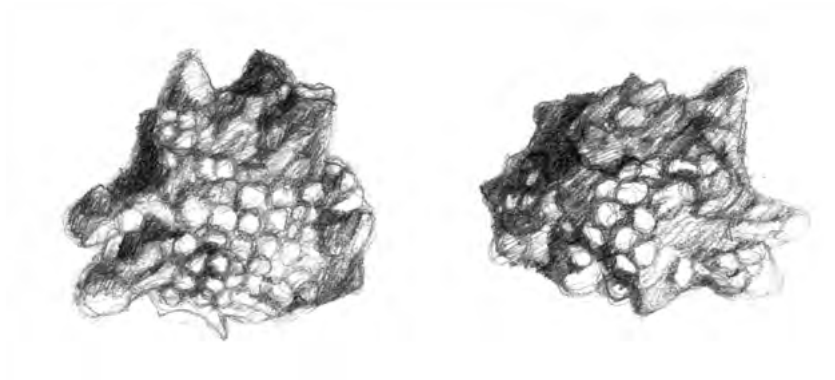
O 1972 *Quinqueloculina curta*



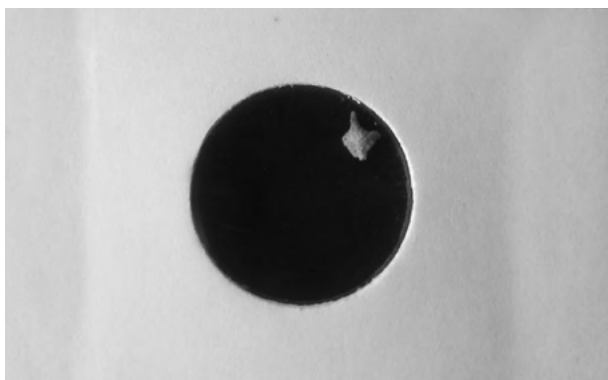
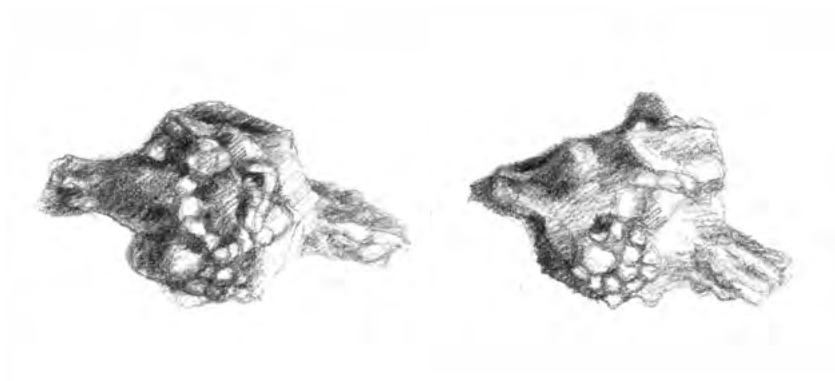




B 8631 *Calcarina spengleri*

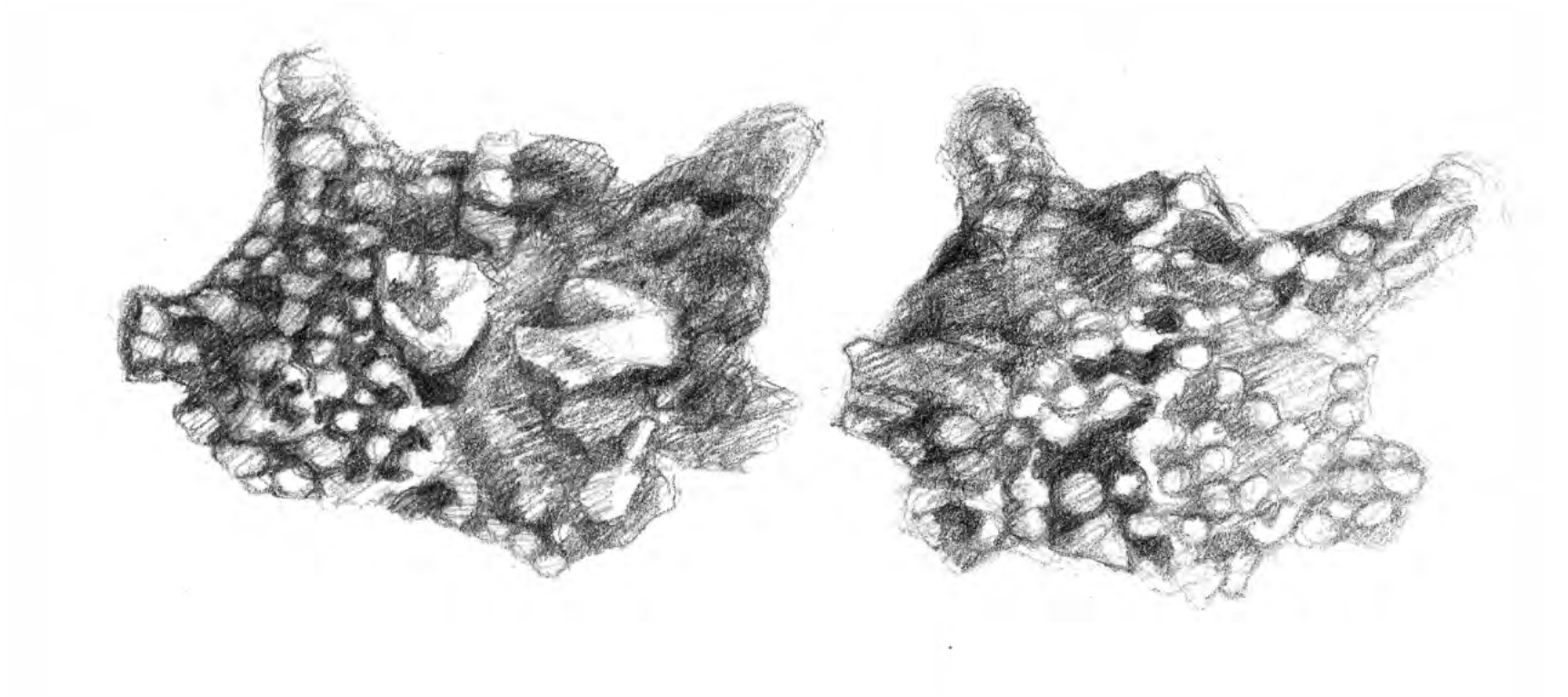


B 8631 *Calcarina spengleri*



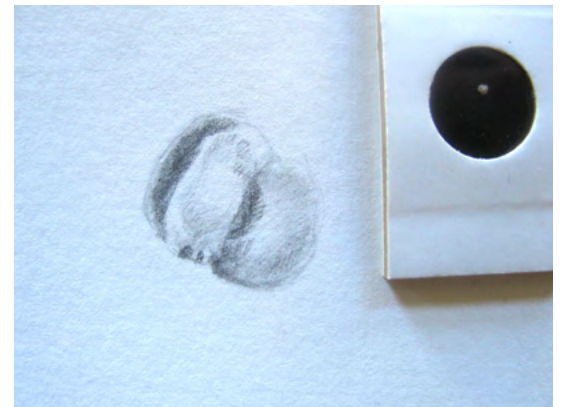
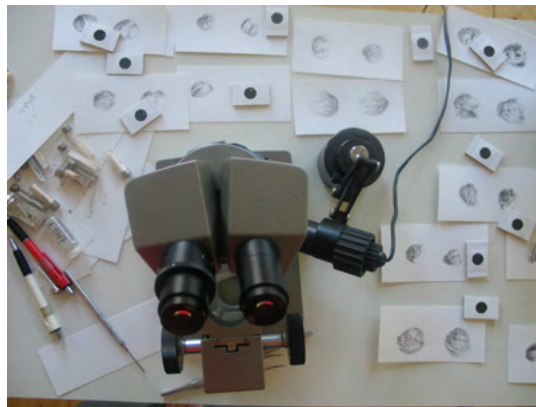
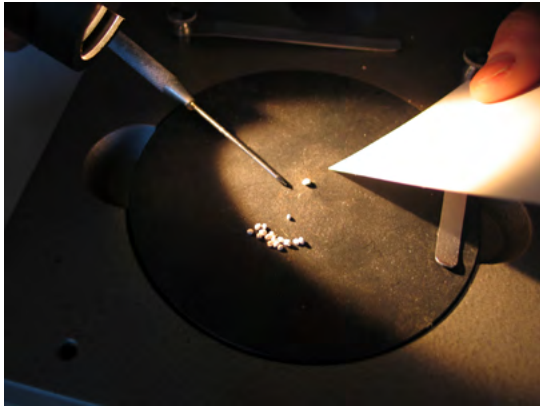
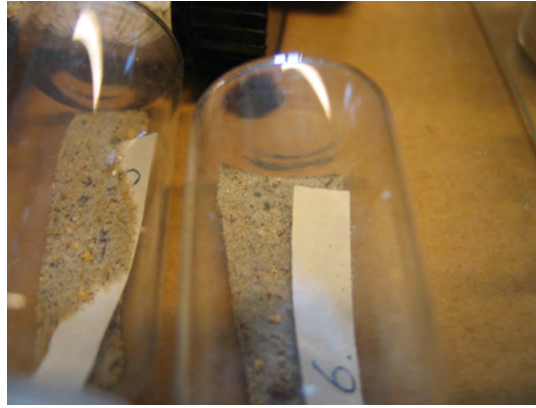
B 8631 *Calcarina spengleri*





B 8631 Calcarina spengleri

Process



Irene Kopelman
Reconstructing Time

This project was made possible with financial support from the M.A.O.C Gravin van Bylandt Stichting and the Van Bijleveltstichting.

Photography Holotypes:
Willem Vermaase

Photography display:
Thomas Manneke

Design PDF:
Ayumi Higuchi

Production Vitrines:
Timo Goosen

Special thanks:
Artis Geological Museum, Kees de Jong and the Rijksakademie, Amsterdam

This work would not have been possible without the help of:
The Artis's personnel, especially Kees De Jong and Michel Hommel; Pieter Kemink, Stephan Kuderna, Wim Janssen from Rijksakademie van Beeldende Kunsten.

Publication:
Reconstructing Time
published by Roma Publications

