



P

Q

R

Scale: 1:2.5

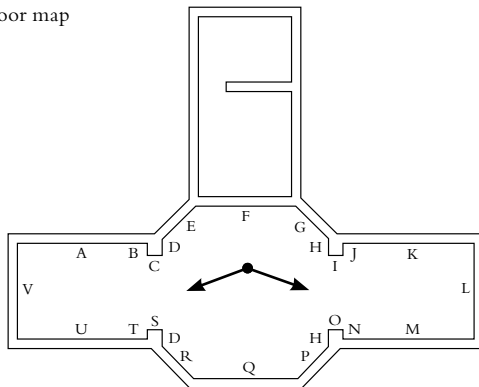
Outline Gallery (Amsterdam, the Netherlands)
September – October 2008

Scale: 1:2.5 was a site-specific exhibition commissioned by Outline Projects in Amsterdam.

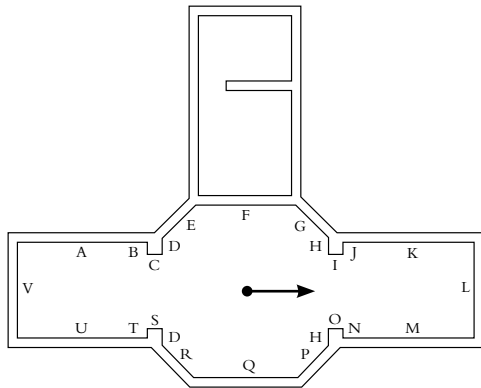
The first step was initiated during an interval between shows when the space was not in use. I traced the texture of the exhibition walls on sheets of paper, sized 80×80 cm using the technique of frottage. A system was established where the papers were positioned on the wall horizontally from left to right and then from bottom to top.

The outcome of this pre-established system was that, at times, when the wall space ran out, edges of the papers remained blank thus blending in with the white walls. A pattern emerged where a half or a third of the paper remained blank while other areas showed the graphite registration of the wall texture. Each sheet of paper was numbered and maps of each wall were made in order to be able to reconstruct the puzzle that slowly emerged. Exactly 292 drawings were generated in this way.

Floor map



drawings
 H86 – 91, 189 – 200
 L132 – 145



H91	H200	H198	H196	H194
H90	H199	H197	H195	H193
H89				H192
H88				H191
H87				H190
H86				H189

L136	L145	L144	L143
L135			L142
L134			L141
L133			L140
L132	L137	L138	L139



The next step was to take the drawings to a studio studio and photograph each of the 292 drawings. The photographs were then printed on matte quality paper at a size four times smaller than the original pieces of paper.

The photographs were installed in the exhibition space, taking care to match them with the areas produced by the initial frottage technique. Printed maps of the original position of the papers were made available to the viewers so that they could trace the relationship in between the photographs and the space.



drawings
K102 - 131



drawings
K102 – 131



K126	K127	K128	K129	K130	K131
K120	K121	K122	K123	K124	K125
K114	K115	K116	K117	K118	K119
K108	K109	K110	K111	K112	K113
K102	K103	K104	K105	K106	K107

drawings
K106, 107, 112, 113



K126	K127	K128	K129	K130	K131
K120	K121	K122	K123	K124	K125
K114	K115	K116	K117	K118	K119
K108	K109	K110	K111	K112	K113
K102	K103	K104	K105	K106	K107

drawing
A1

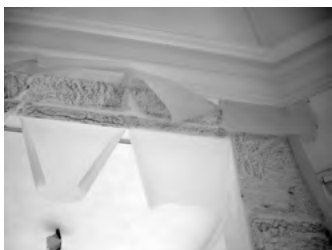


process



drawing
H196

process



drawing
V282



process



Irene Kopelman
Scale: 1:2.5

Curated by:
Eva Fotiadi

Credit documentation of the exhibition:
Stergios Karavatos

Design PDF:
Ayumi Higuchi

Sponsored by:
Stichting Outline

Special thanks:
Eva Fotiadi, Christine van den Bergh,
Rachel Esner, Nina Yuen, Roy Taylor,
Benjamin Roth and The Rijksakademie
van beeldende kunsten