



I

II

III

Flores

Homo Ludens-Act II at Motive Gallery (Amsterdam, the Netherlands)
November 2011

A large part of my practice involves travelling to distant locations in search of landscapes that provide not only subjects for drawings, but also points of inspiration for the further development of a project.

I am often drawn to landscapes for their textures. A lava formation that I see in a book, a salt crust that someone shows me, a glacier pattern that I find randomly online—these are fragments of immense and incomprehensible landscapes, small sections of a place that put my mind in motion and allow fantastical ideas to form.

During 2011 I spent three months at EKWC (European Ceramic Work centre, in the city of 's-Hertogenbosch). My time at EKWC was invested in trying to give a form to my ideas, by creating a chart of desired textures that I wanted to realise and work with in depth. This starting point led me to a series of material experimentations that also became a search for a language in the medium of ceramics.

map

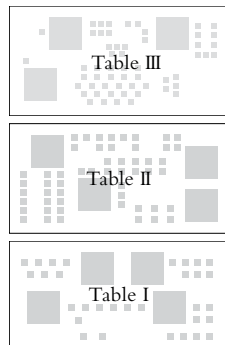
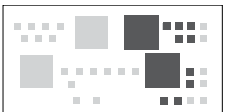
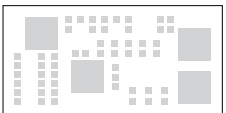
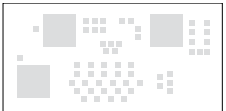
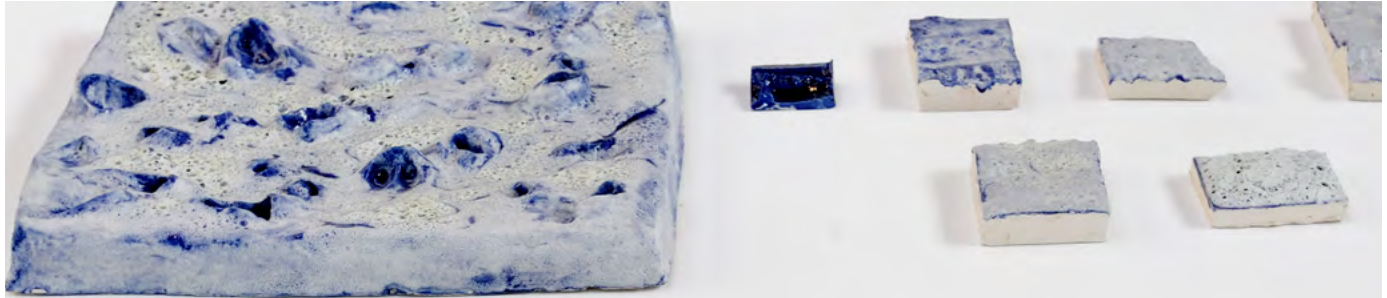
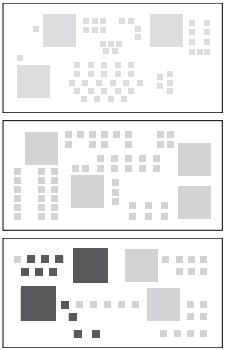


Table I
4 tiles: 45×45 cm
31 pieces: 3×3 to 12×14 cm







process

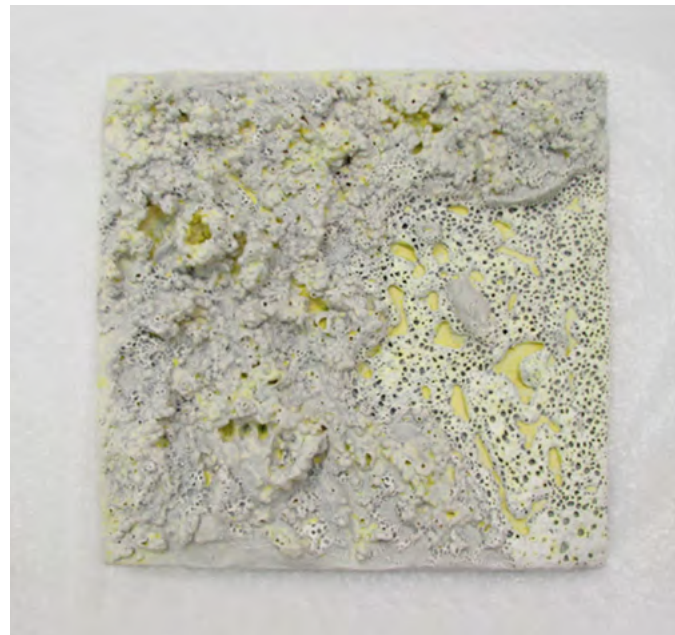
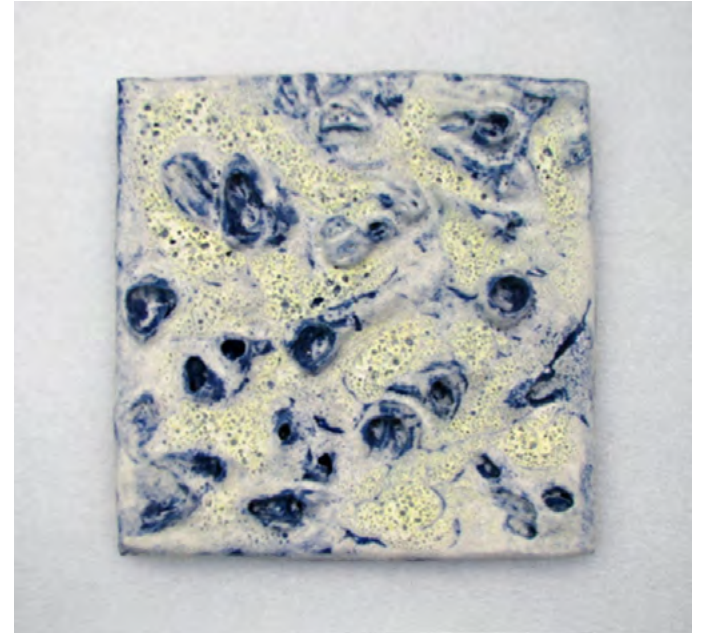
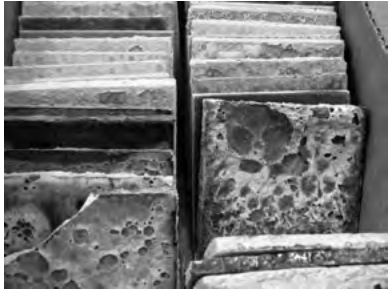
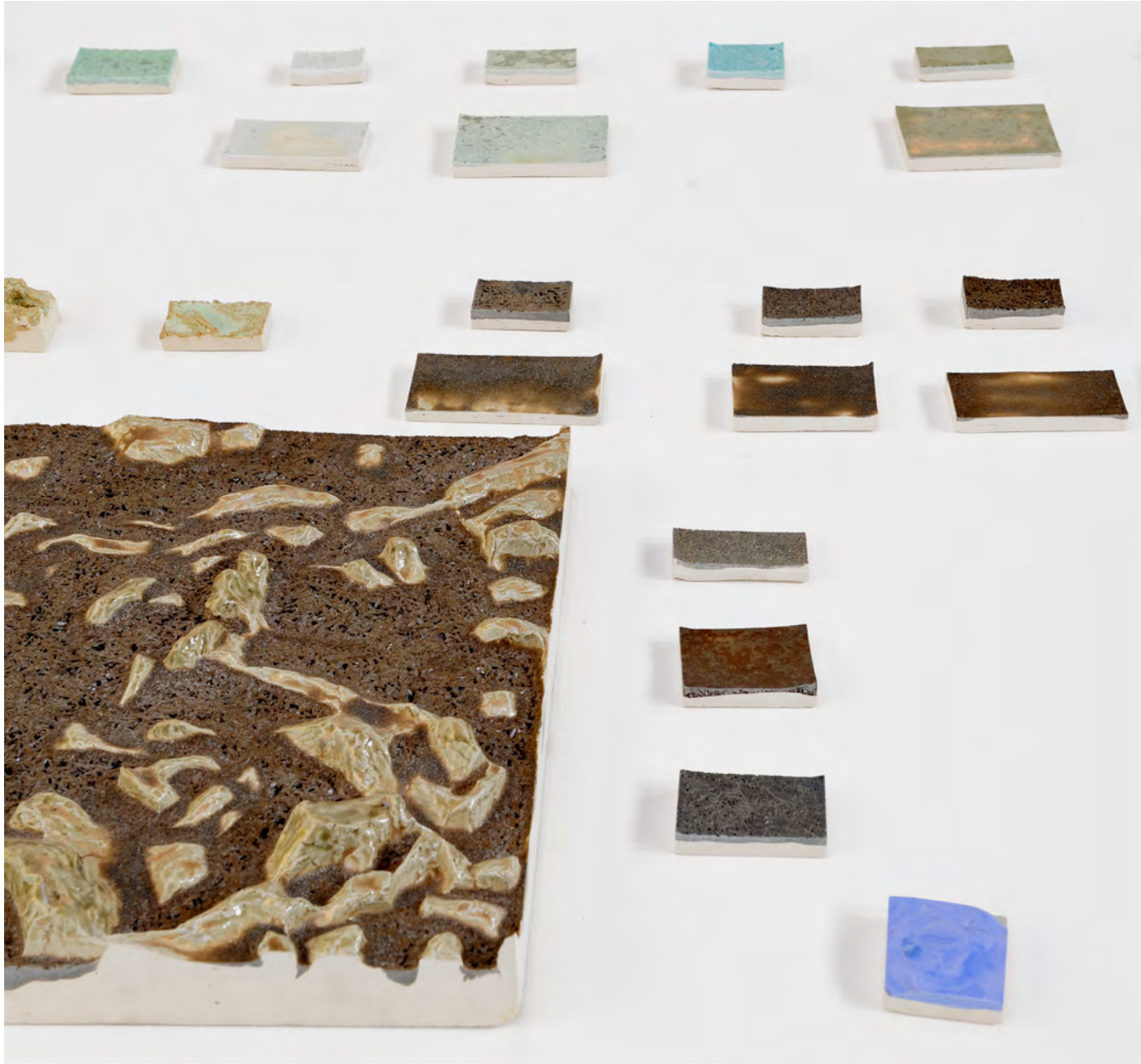
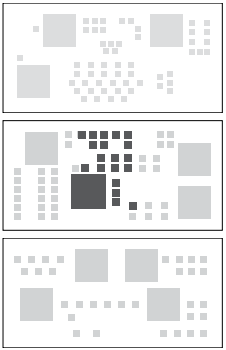


Table II
4 tiles: 45×45 cm
65 pieces: 3×3 to 12×14 cm





process

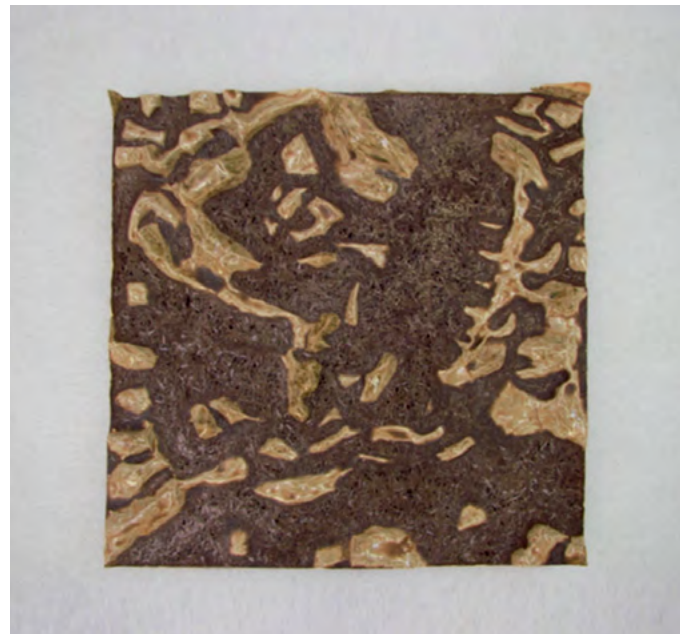
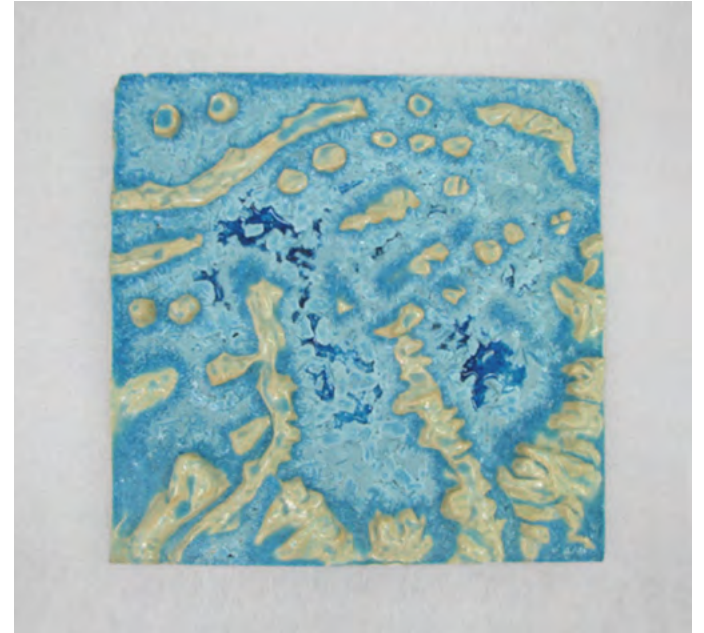
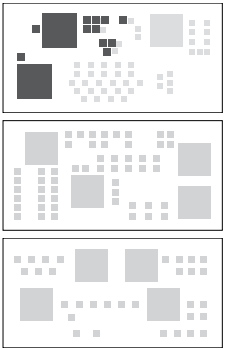
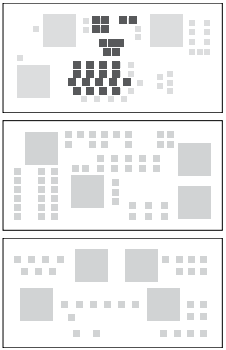
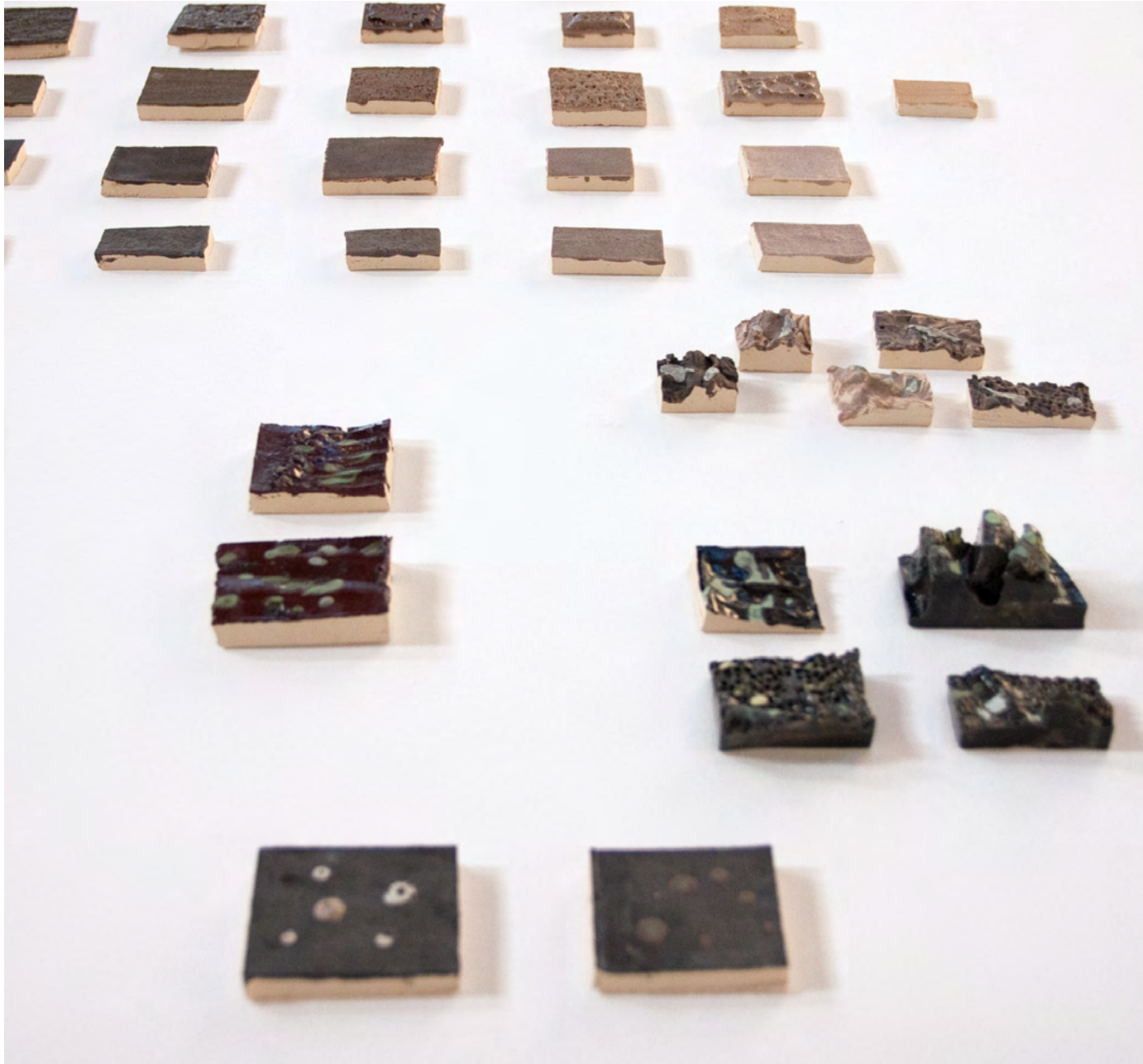


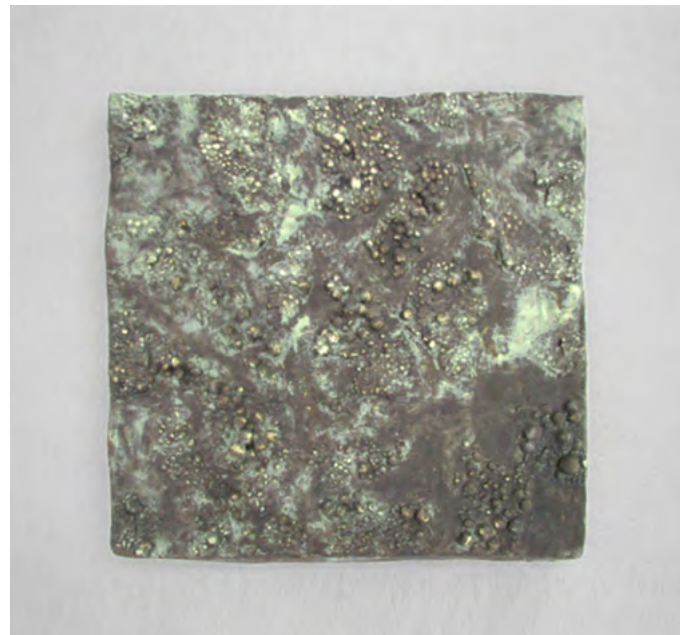
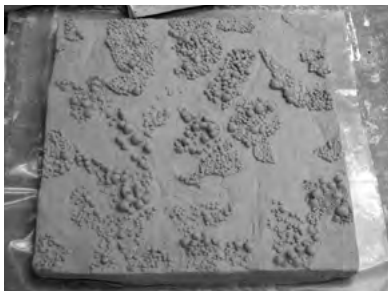
Table III
3 tiles: 45×45 cm
57 pieces: 3×3 to 12×14 cm







process

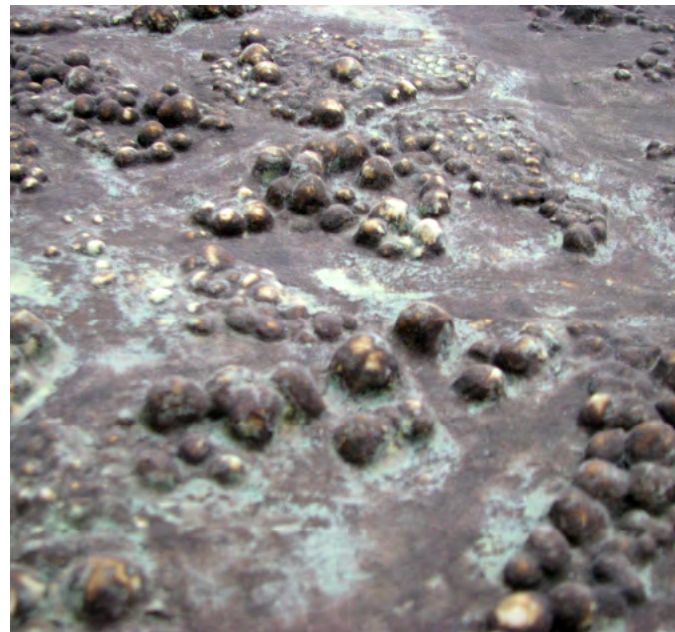


technical specifications

| | | | | |
|--------------|-----------------------|----------------|--|----|
| Name | June | Studio | Month | 13 |
| Sliver size | Firing temperature | Remarks | | |
| Applied by | Clay body | Surface | Green engobe one one which lead mud (15) | |
| Sliver base | width | % | 1 | 2 |
| SDM | 100% | 500 gr | | |
| Clay | 20% | 5 gr | | |
| Water | 17% | 5 gr | | |
| Water | 0.3% | 1.5 gr | | |
| Water | 60% | 30.3 | | |
| Sliver size | Firing temperature | Remarks | | |
| Applied by | Clay body | Surface | yellow engobe (M) | |
| Sliver base | width | % | 1 | 2 |
| SDM | 100% | 600 gr | | |
| Clay | 20% | 120 gr | | |
| Water | 17% | 120 gr | | |
| Water | 0.3% | 1.8 gr | | |
| Water | 60% | 360 | | |
| Example | Sliver material 600 g | Addition 0.3 % | | |
| To calculate | SDM x 0.3 % | | | |



| | | | | |
|--------------|-----------------------|----------------|---------------------|----|
| Name | June | Studio | Month | 13 |
| Sliver size | Firing temperature | Remarks | | |
| Applied by | Clay body | Surface | black engobe (7) | |
| Sliver base | width | % | 1 | 2 |
| SDM | 100% | 400 gr | | |
| Clay | 20% | 80 gr | | |
| Water | 17% | 68 gr | | |
| Water | 0.3% | 1.2 gr | | |
| Water | 60% | 240 | | |
| Sliver size | Firing temperature | Remarks | | |
| Applied by | Clay body | Surface | | |
| Sliver base | width | % | 1 | 2 |
| SDM | | | | |
| Clay | | | | |
| Water | | | | |
| Water | | | | |
| Water | | | | |
| Example | Sliver material 600 g | Addition 0.3 % | | |
| To calculate | SDM x 0.3 % | | | |



Irene Kopelman
Flores

Curated by:
Petra Kuipers and Chris Bestebeurtje

Credit documentation of the exhibition:
Mike Bink

Design PDF:
Ayumi Higuchi

Sponsored by:
EKWC (Europees Keramisch werkcentrum)
and Mondriaan Fund

Special thanks:
Motive Gallery and the team of
EKWC (Europees Keramisch werkcentrum)