

# GASWORKS



## *The Challenger's Report*

Gasworks (London, United Kingdom)  
February–April 2012

*The Challenger's Report*

The title refers to the Challenger expedition of 1872–76, the discoveries of which laid the foundations of modern oceanography.

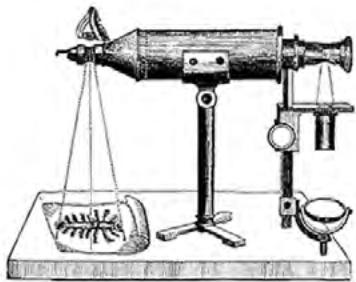




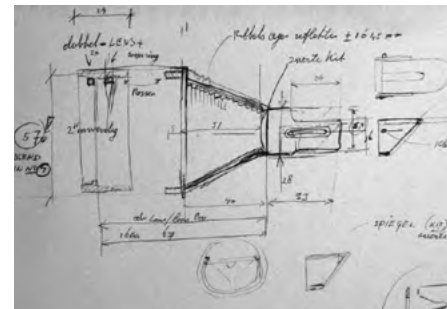
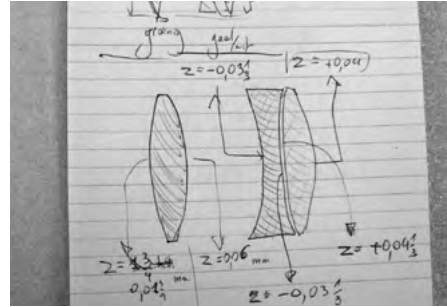
★

Graphic telescope—brass replica of the optical instrument developed by British artist and inventor Cornelius Varley in 1807. The instrument displayed was reconstructed by Tiemen Cocquyt and Paul Steenhorst from the Museum Boerhaave in Leiden.

original



process



## Space I

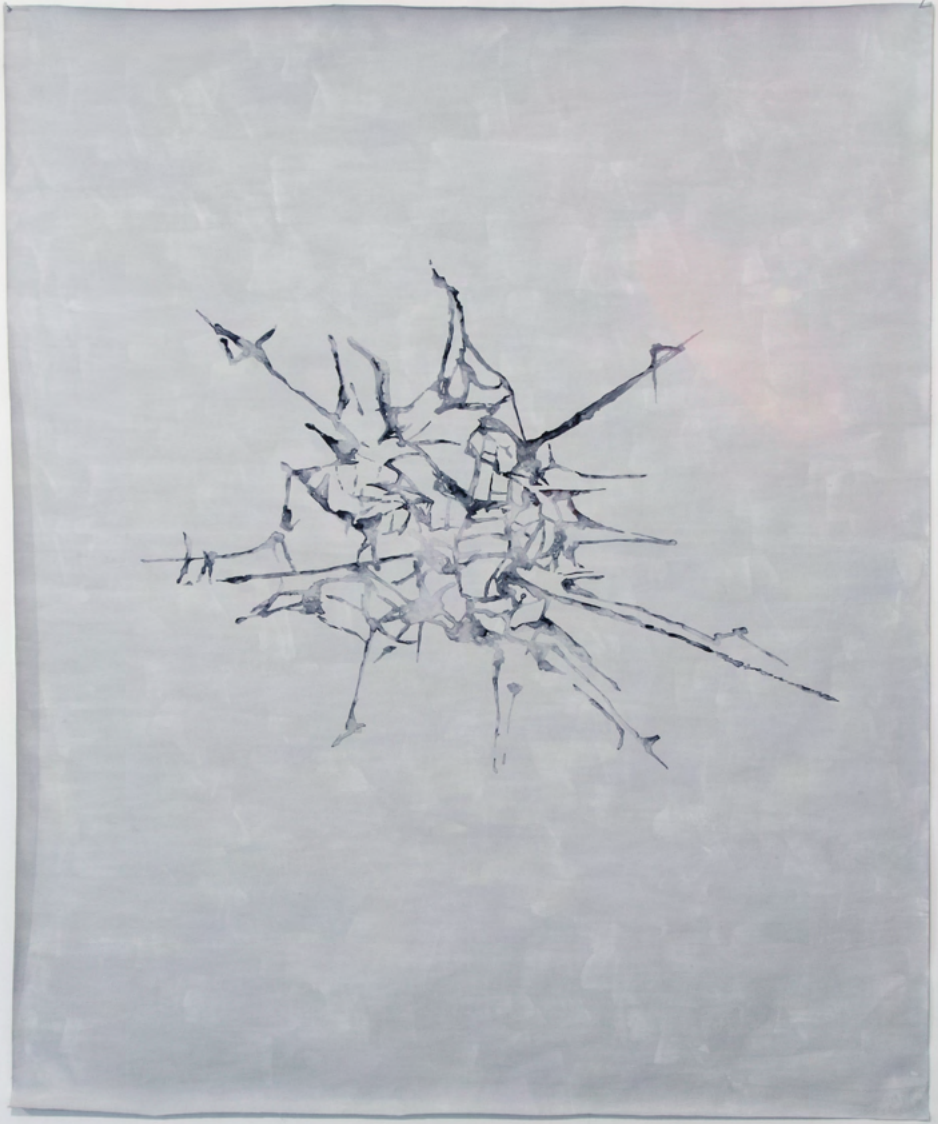
Paintings based on a collection of microfossils brought back from the Antarctic plate following Robert Scott's ill-fated Terra Nova expedition of 1910, and now held at the Natural History Museum in London.

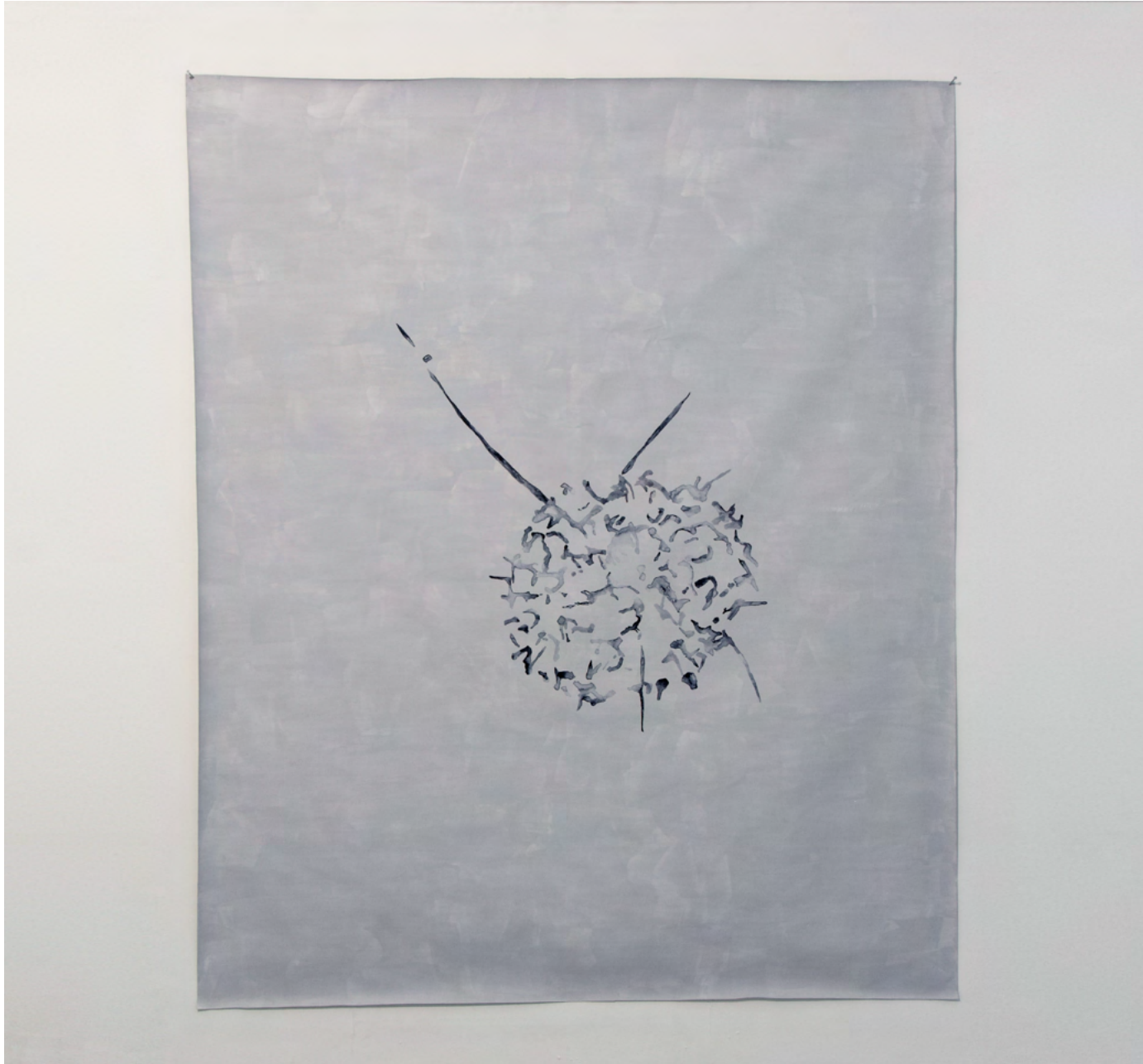




i  
3 paintings  
acrylic on canvas  
220 × 190cm

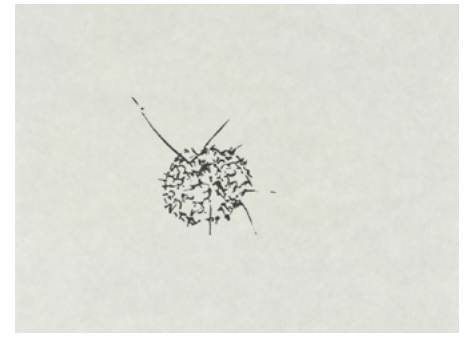
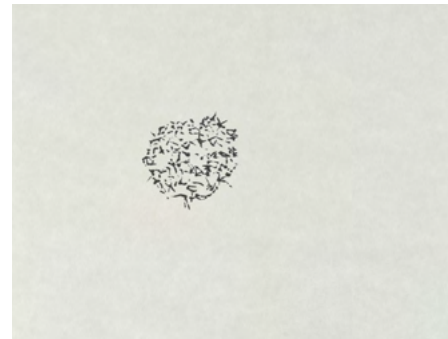
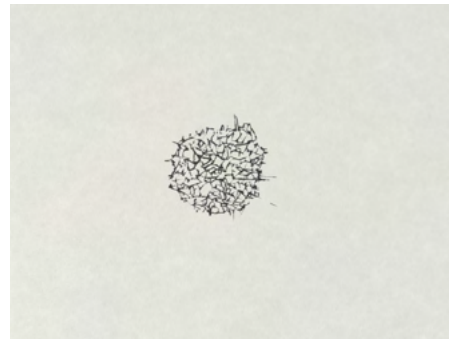
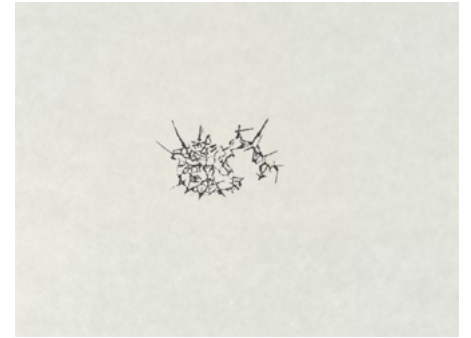
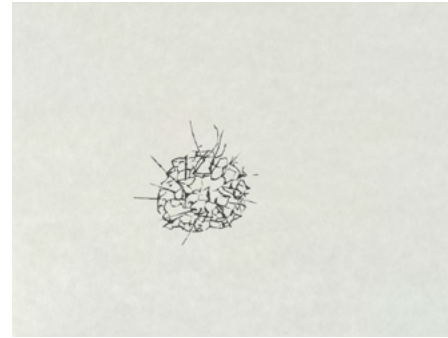
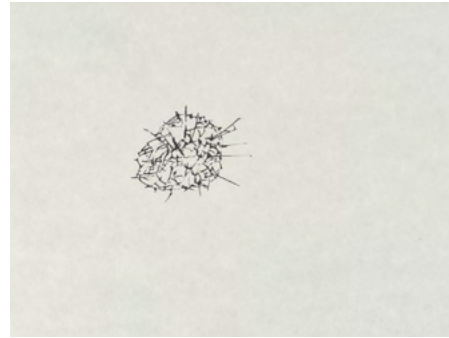
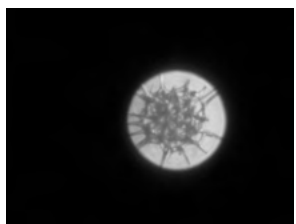
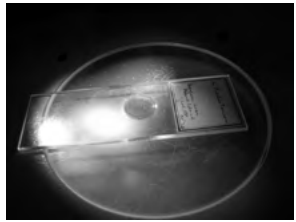








research



i'  
original samples of microfossils



## Space II

*La morfología del paisaje determina sus vistas (The Morphology of the Landscape Determines its Views, 2011)*. Produced for and exhibited in 2011 at the 8 Bienal Do Mercosul, BR. The project departed from a series of field trips to the Canyons in Cambara Do Sul, Porto Alegre.





ii  
installation view, drawings

ii-i



ii-iii



process



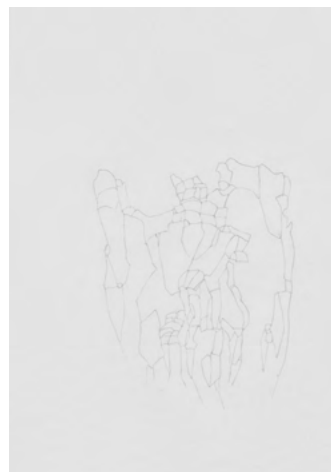
ii-i  
3 paintings  
watercolor on paper  
23 × 29.5cm



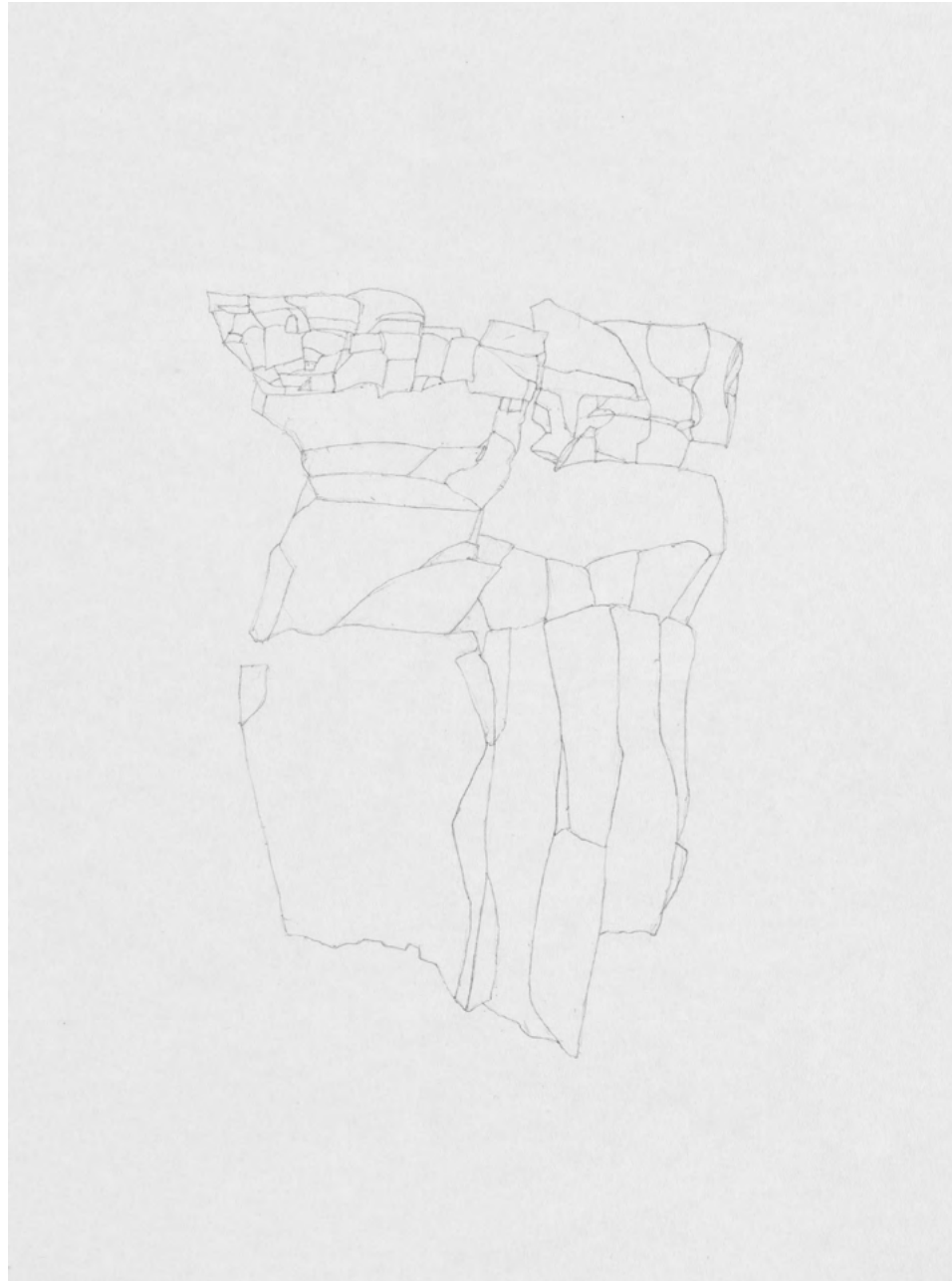




ii-ii  
9 drawings  
pencil on paper  
29 × 21cm



landscape



ii-iii  
5 paintings  
watercolor on paper  
23 × 29.5cm





landscape



iii  
Puzzle  
clay  
220 × 280cm

drawing with numbers ;  
also redrawn at the entrance





process





landscape



Irene Kopelman  
*The Challenger's Report*

Curated by:  
Robert Leckie  
Part of the works were previously produced  
and displayed at the 8<sup>th</sup> Mercosul Visual Arts  
Biennial in the exhibition module curated  
by Aracy Amaral

Documentation of the exhibition:  
Matthew Booth

Design PDF:  
Ayumi Higuchi

Sponsored by:  
This exhibition was made possible with the  
generous support of Catherine Petitgas and the  
Mondriaan Fund, Amsterdam. *La morfologia del  
paisaje determina sus vistas* was produced for the  
8<sup>th</sup> Mercosul Visual Arts Biennial with thanks  
to Fundação Bienal do Mercosul, Ministério  
da Cultura and the Governo do Estado do Rio  
Grande do Sul.

Special thanks:  
Robert Leckie, Alessio Antonioli from  
Gasworks; Dr Giles Miller from The Natural  
History Museum in London; Tiemen Cocquyt  
from Museum Boerhaave in Leiden; Aracy  
Amaral, Adauany Zimovski and Jose Roca  
from the 8<sup>th</sup> Mercosul Visual Arts Biennial.