



i

ii

iii

The Levy's Flight

Montehermoso Cultural Center (Vitoria-Gasteiz, Spain)
May 2009

The Levy's Flight is an installation which took form following a research visit to the Hawai'i Volcanoes National Park in October 2008.

During the visit I realized a series of drawings, sketches for a series of sculptures and a huge number of photographs. Back in the studio, the material underwent a series of conceptual filters till it reached the form in which it was presented at the Montehermoso. All the pieces reference different elements of the landscape in Hawai'i Volcanoes National Park.

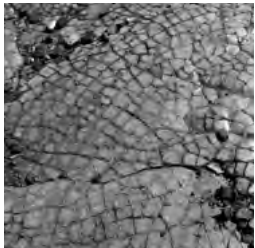


i

puzzle piece
clay with pigments
220 × 220 cm

The puzzle is a sculptural piece that is based on the tracing of a fragment of the volcanic surface, where the lava is older and therefore cracks and breaks.

original landscape (left)
drawing with numbers (right)





process



ii

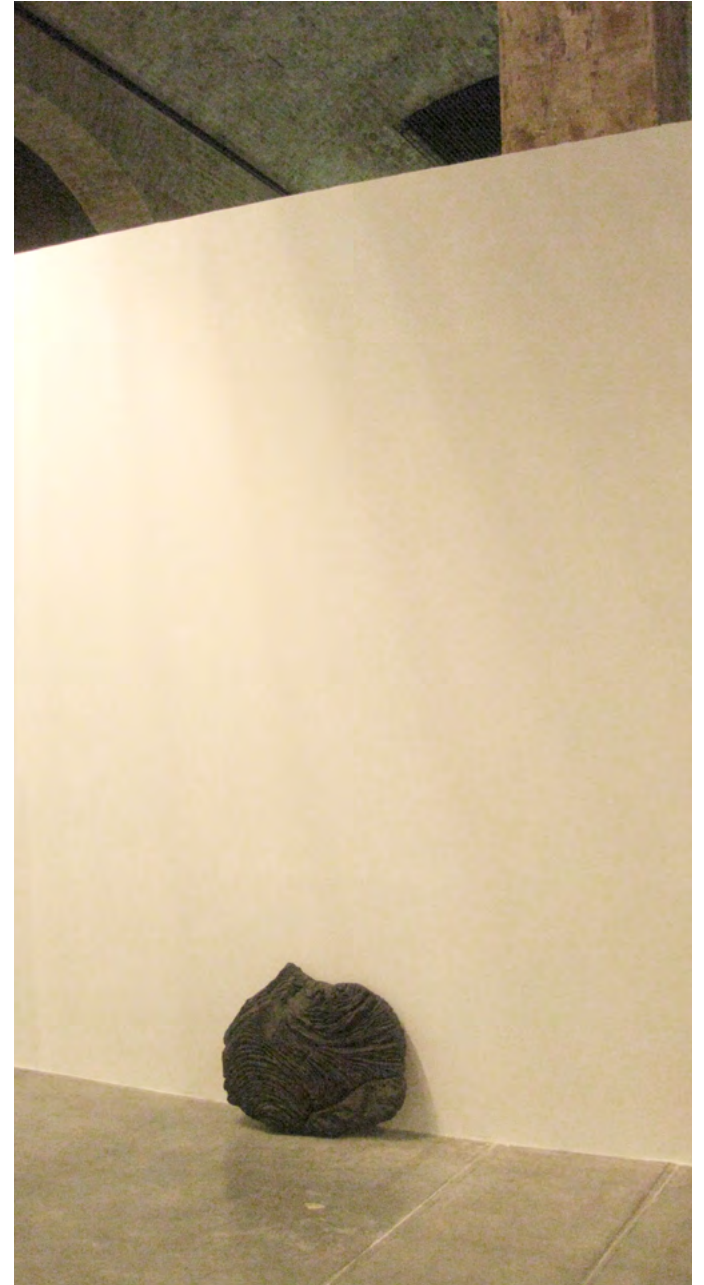
reliefs

black clay, variable sizes (smallest: $10 \times 45 \times 10$ cm, largest: $80 \times 70 \times 12$ cm)

The reliefs reference fragments or crusts which stick out from the usually flat volcanic formations.

original landscape

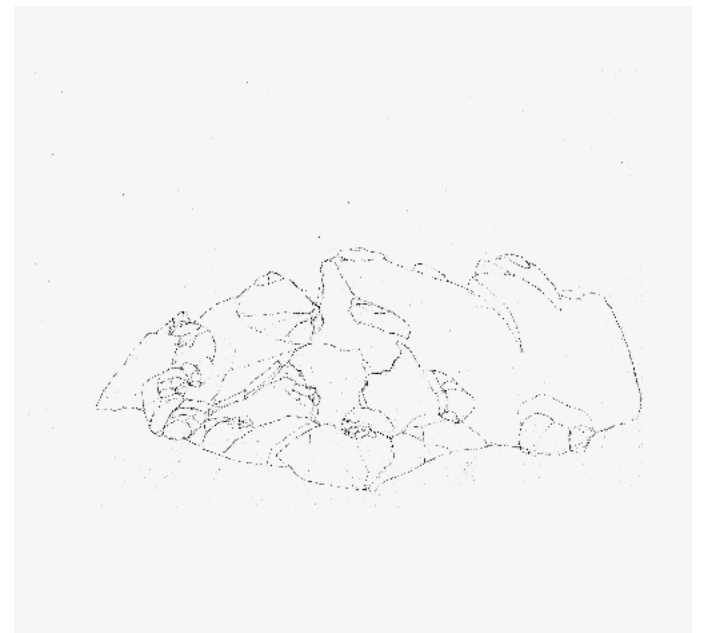
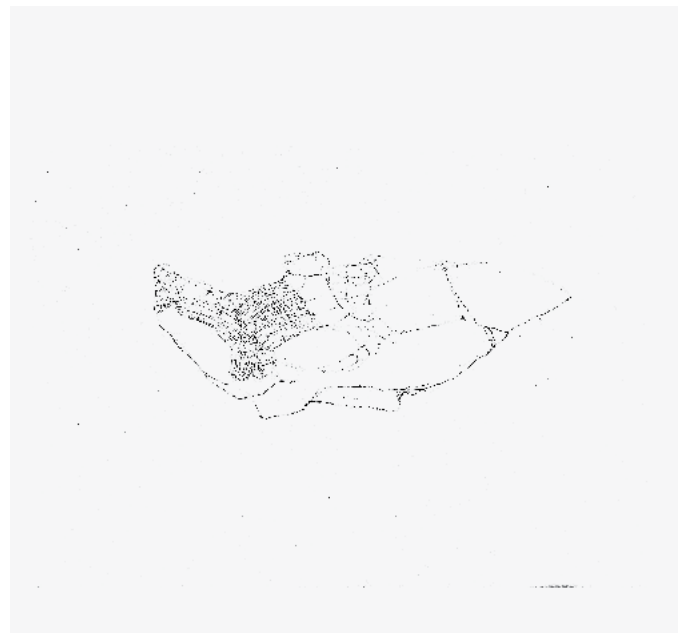
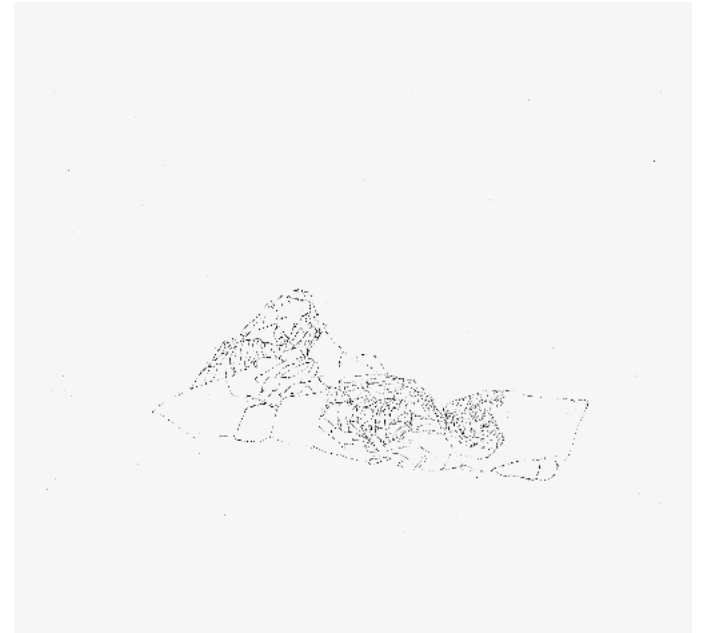
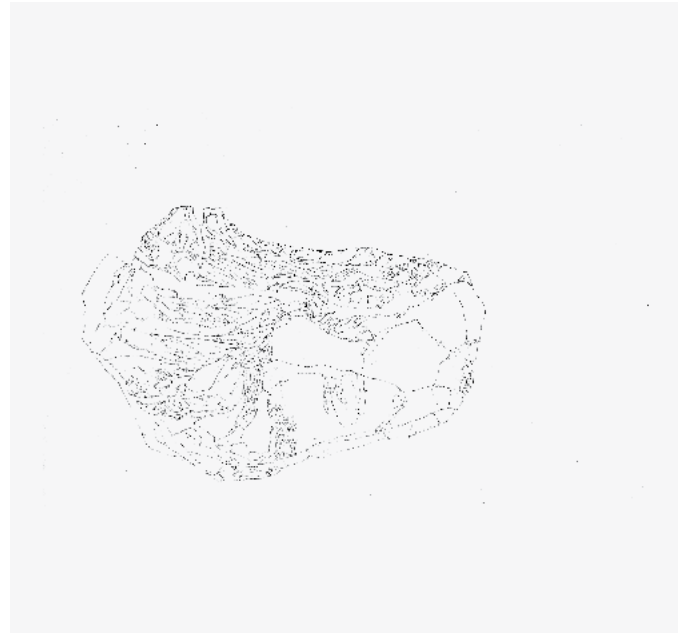




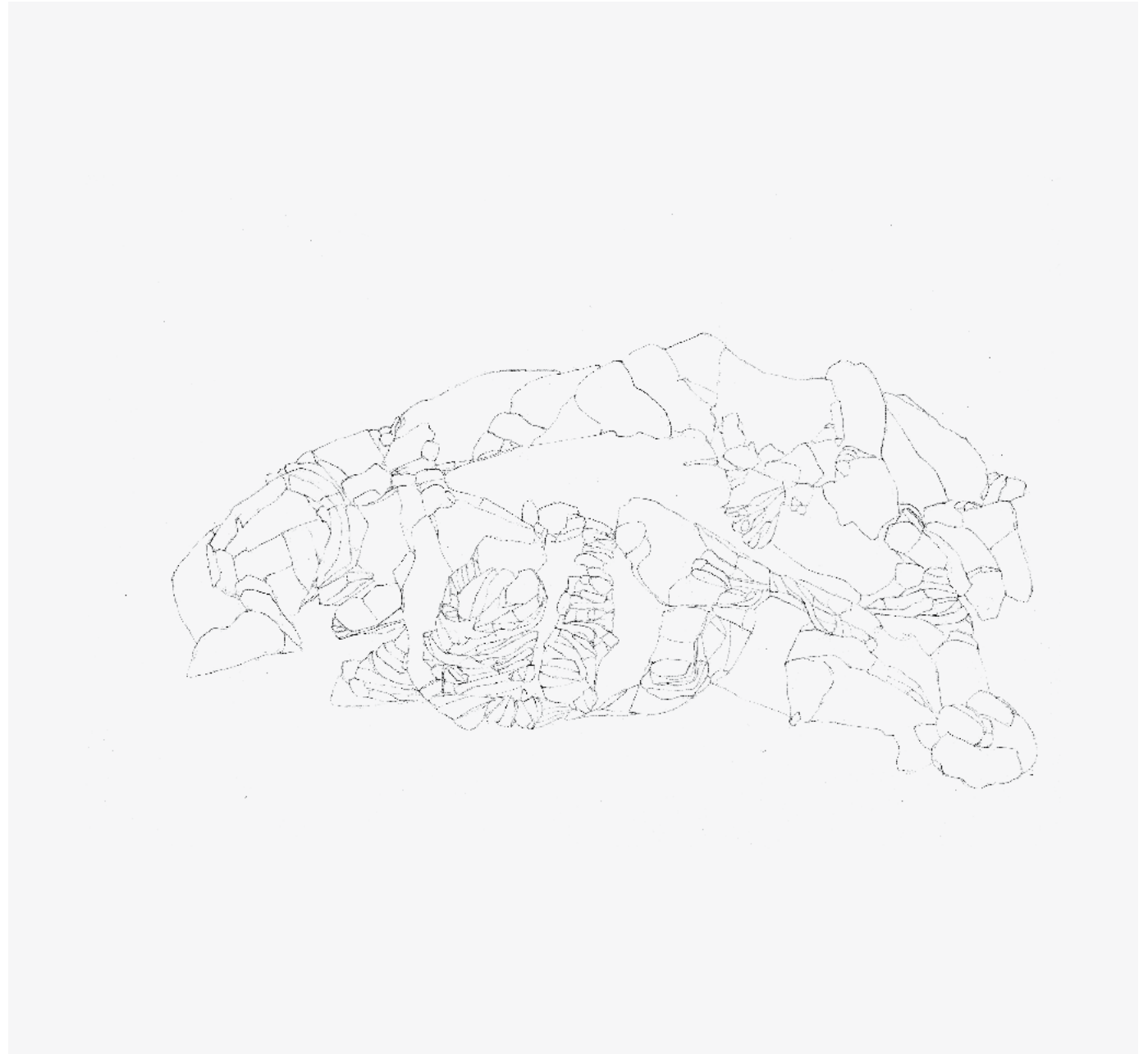
process



iii
series of 10 drawings
29×21 cm



All the pieces (i-iii) attempt to trace back something of that landscape in an almost romantic attempt to comprehend it. This strategy recalls the travelers from past centuries in their attempt to represent, organize and bring back to their homeland discoveries made of far away territories.



Irene Kopelman
The Levy's Flight

Curated by:
Beatriz Herraiz

Credit documentation of the exhibition:
César San Millán

Design PDF:
Ayumi Higuchi

Sponsored by:
Centro Cultural Montehermoso Kulturenea

Special thanks:
Xabier Arakistain, Beatriz Herraiz,
Almudena Diaz from Centro Cultural
Montehermoso Kulturenea; Nina, Noelle;
Chris Yuen; Pieter Kemink and Motive Gallery