



## *Flores*

*Homo Ludens-Act II* at Motive Gallery (Amsterdam, the Netherlands)  
November 2011

A large part of my practice involves travelling to distant locations in search of landscapes that provide not only subjects for drawings, but also points of inspiration for the further development of a project.

I am often drawn to landscapes for their textures. A lava formation that I see in a book, a salt crust that someone shows me, a glacier pattern that I find randomly online—these are fragments of immense and incomprehensible landscapes, small sections of a place that put my mind in motion and allow fantastical ideas to form.

During 2011 I spent three months at EKWC (European Ceramic Work centre, in the city of 's-Hertogenbosch). My time at EKWC was invested in trying to give a form to my ideas, by creating a chart of desired textures that I wanted to realise and work with in depth. This starting point led me to a series of material experimentations that also became a search for a language in the medium of ceramics.

map

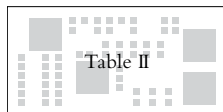
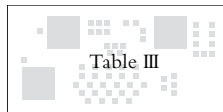
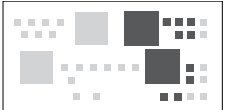
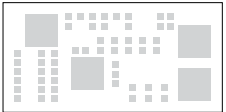
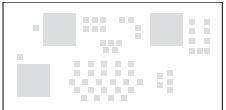
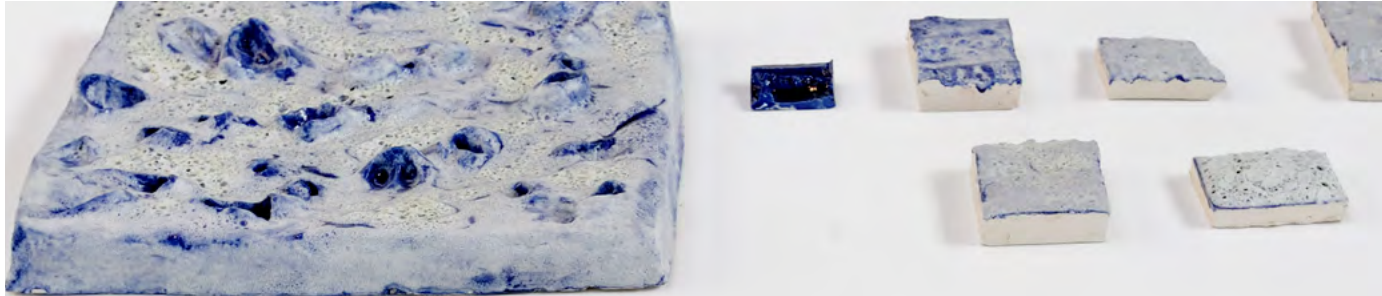
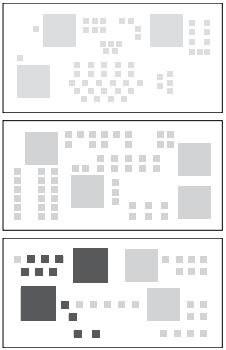
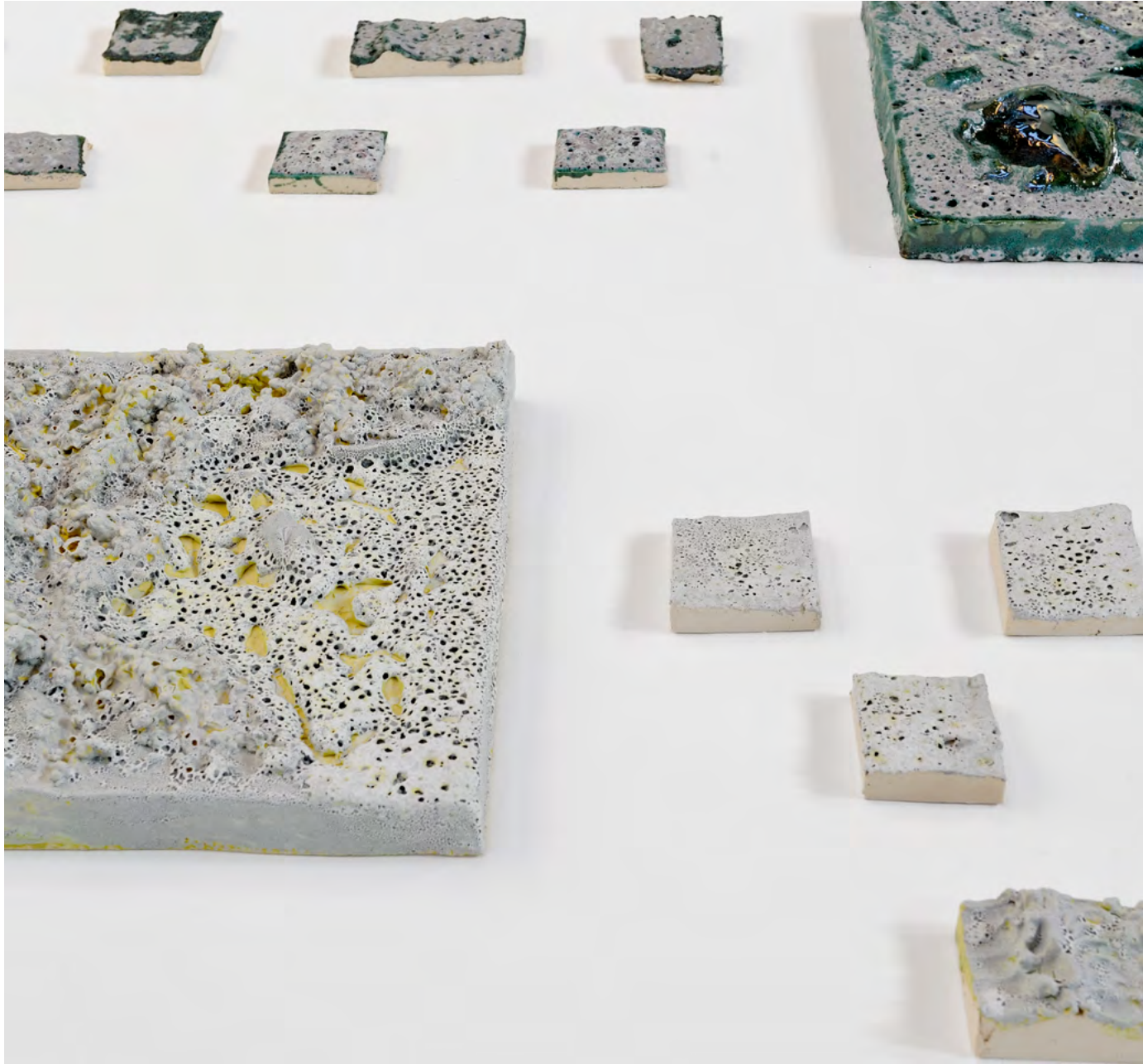


Table I  
4 tiles: 45 × 45 cm  
31 pieces: 3 × 3 to 12 × 14 cm







process

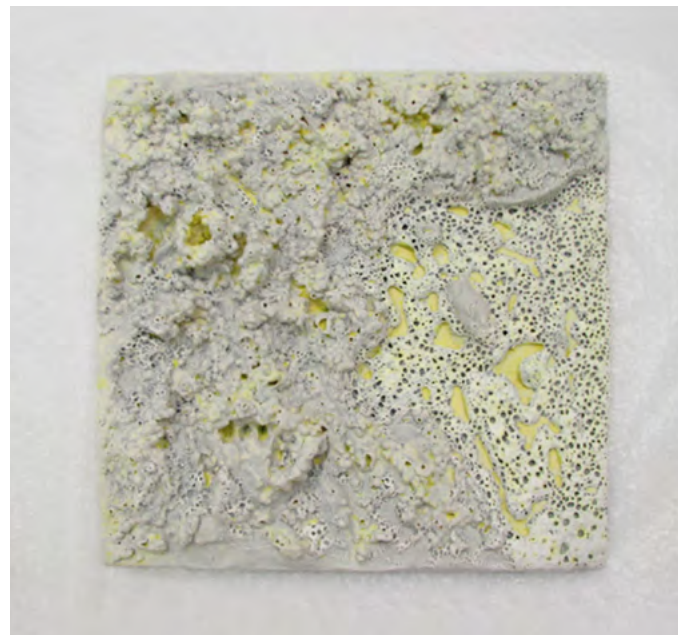
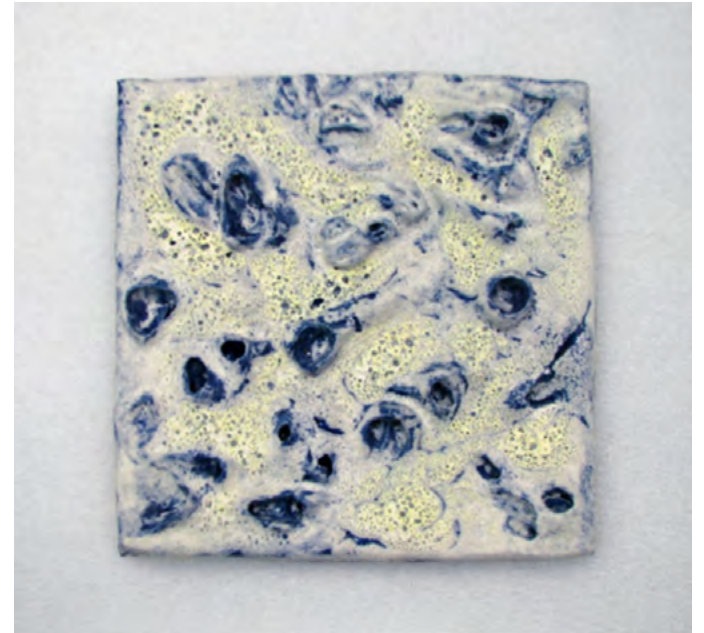
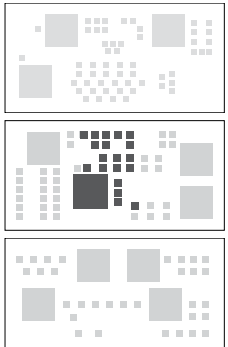




Table II  
4 tiles: 45 × 45 cm  
65 pieces: 3 × 3 to 12 × 14 cm







process

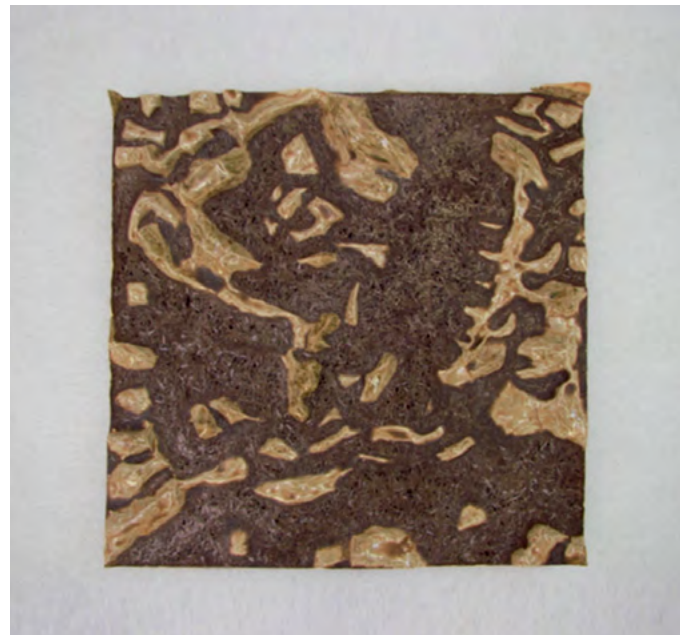
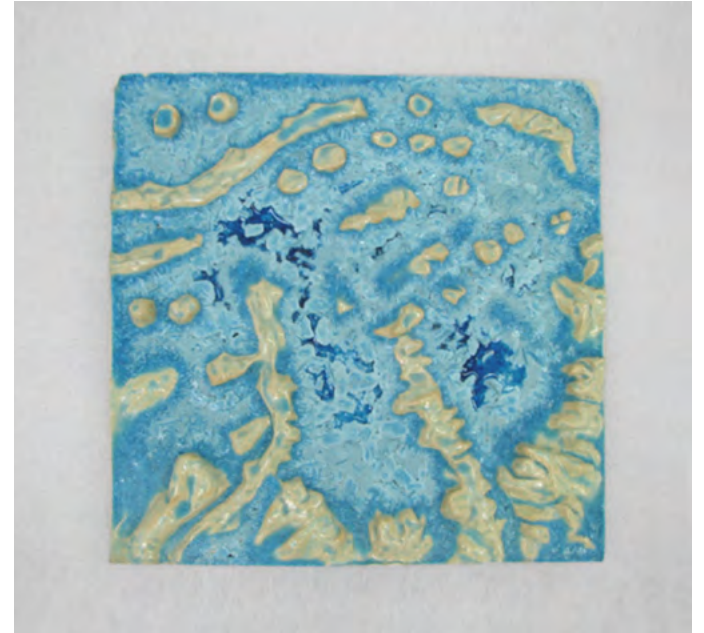
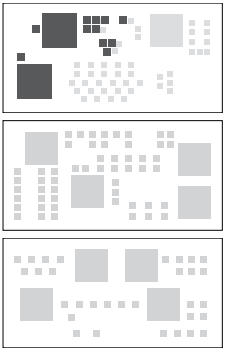
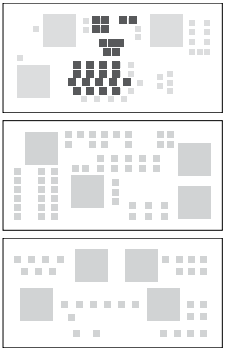
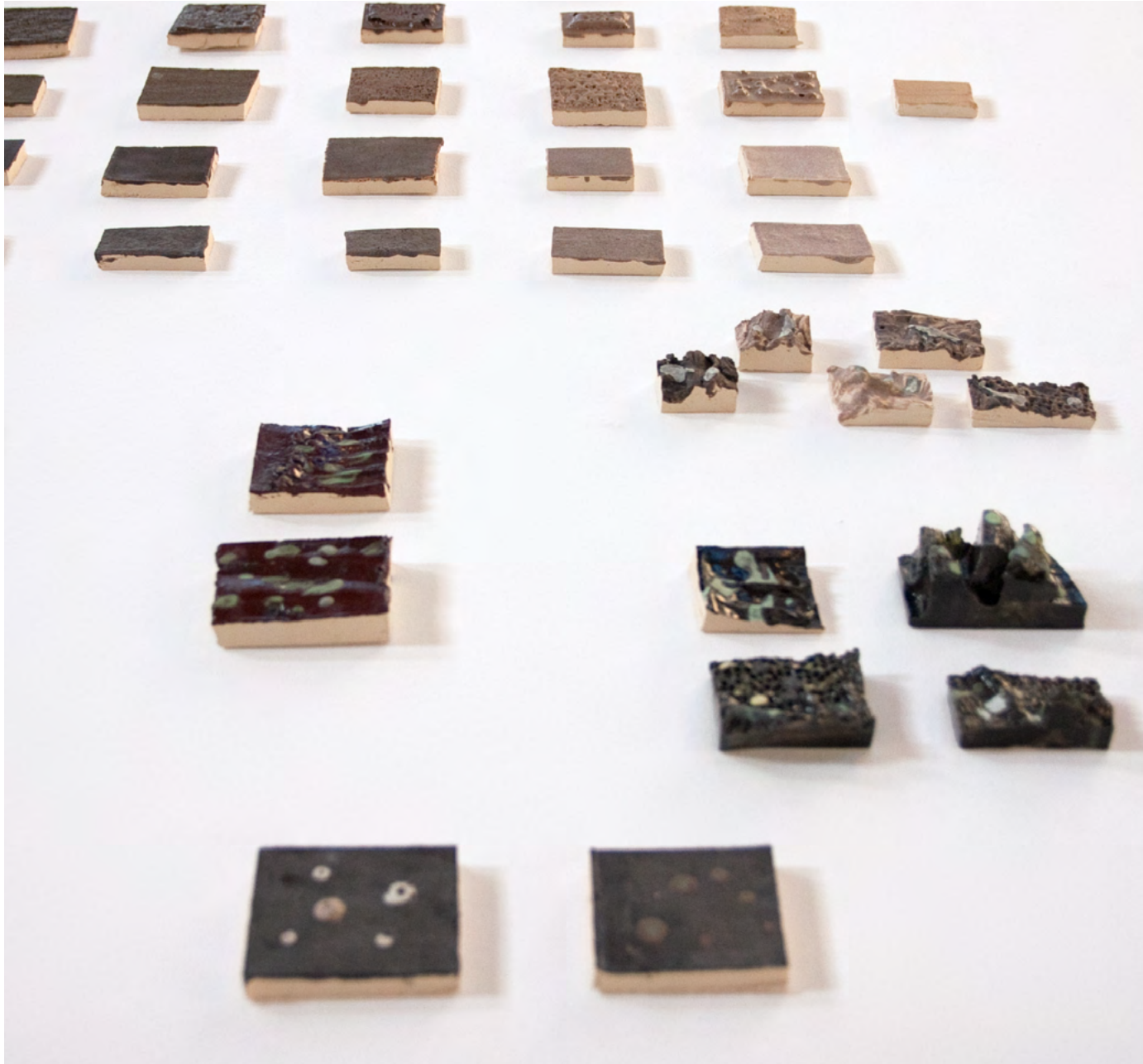




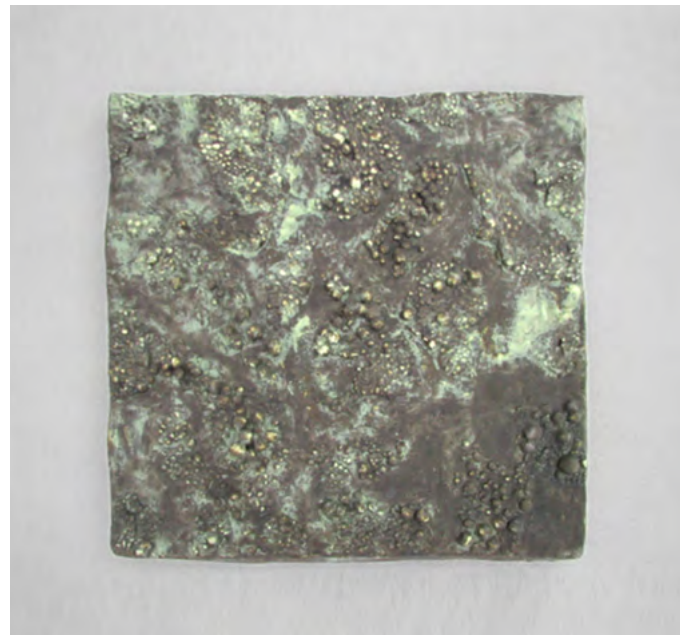
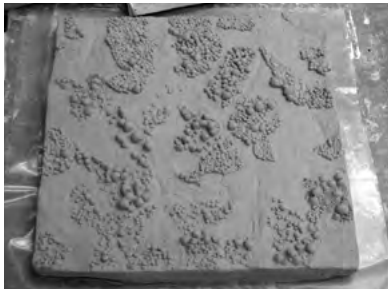
Table III  
3 tiles:  $45 \times 45$  cm  
57 pieces:  $3 \times 3$  to  $12 \times 14$  cm







process

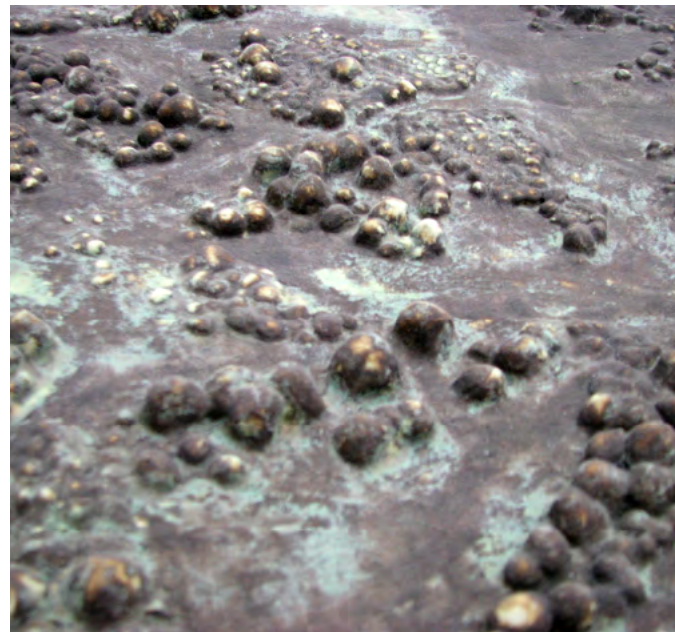


technical specifications

Name	Jana K	Studio	Month	18				
Glass size	Firing temperature	Remarks						
Applied by	Clay body	Green engobe re one wash lead red (15)						
Surface								
Glass base	recipr	%	1	2	3	4	5	6
S.P.M	100%	500 gr						
Copper oxide	17%	3 gr						
Lead oxide	17%	5 gr						
Bismuth	0.5%	1.5 gr						
Flux	20%	30.5						
Flux water								
Glass size	Firing temperature	Remarks						
Applied by	Clay body	yellow engobe (14)						
Surface								
Glass base	recipr	%	1	2	3	4	5	6
Se 20	100%	500 gr						
R 20.7	20%	120 gr						
R 20.5	0.9%	0.9 gr						
Copper II Oxide	17%	5 gr						
Bismuth	0.2%	1.5 gr						
Flux	60%	900						
Flux water								
Example	Base material 500 g	Addition 0.3 %						
To calculate	500 x 0.3 %							



Name		Studio	Month	18				
Glass size	Firing temperature	Remarks						
Applied by	Clay body	black engobe (7)						
Surface								
Glass base	recipr	%	1	2	3	4	5	6
SiO2	100%	400 gr						
Na2O	15%	60 gr						
CaO	5%	20 gr						
Copper II Oxide	1%	4 gr						
Bismuth								
Flux	80%	250						
Flux water								
Glass size	Firing temperature	Remarks						
Applied by	Clay body							
Surface								
Glass base	recipr	%	1	2	3	4	5	6
Copper II Oxide								
Bismuth								
Flux								
Flux water								
Example	Base material 500 g	Addition 0.3 %						
To calculate	500 x 0.3 %							





Irene Kopelman  
*Flores*

Curated by:  
Petra Kuipers and Chris Bestebeurtje

Credit documentation of the exhibition:  
Mike Bink

Design PDF:  
Ayumi Higuchi

Sponsored by:  
EKWC (Europees Keramisch werkcentrum)  
and Mondriaan Fund

Special thanks:  
Motive Gallery and the team of  
EKWC (Europees Keramisch werkcentrum)